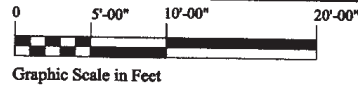




Third Floor



Each condominium unit shall have as its boundaries:

- The under side of the exterior paint on exterior building walls.
- The centerline of interior demising walls between units.
- The under side of the paint on interior walls adjoining common elements.

- All bearing walls located within a condominium unit constitute a part of the common elements up to the unfinished surfaces of said walls.

- Common Element = (C.E.) and limited Common Element = (L.C.E.).

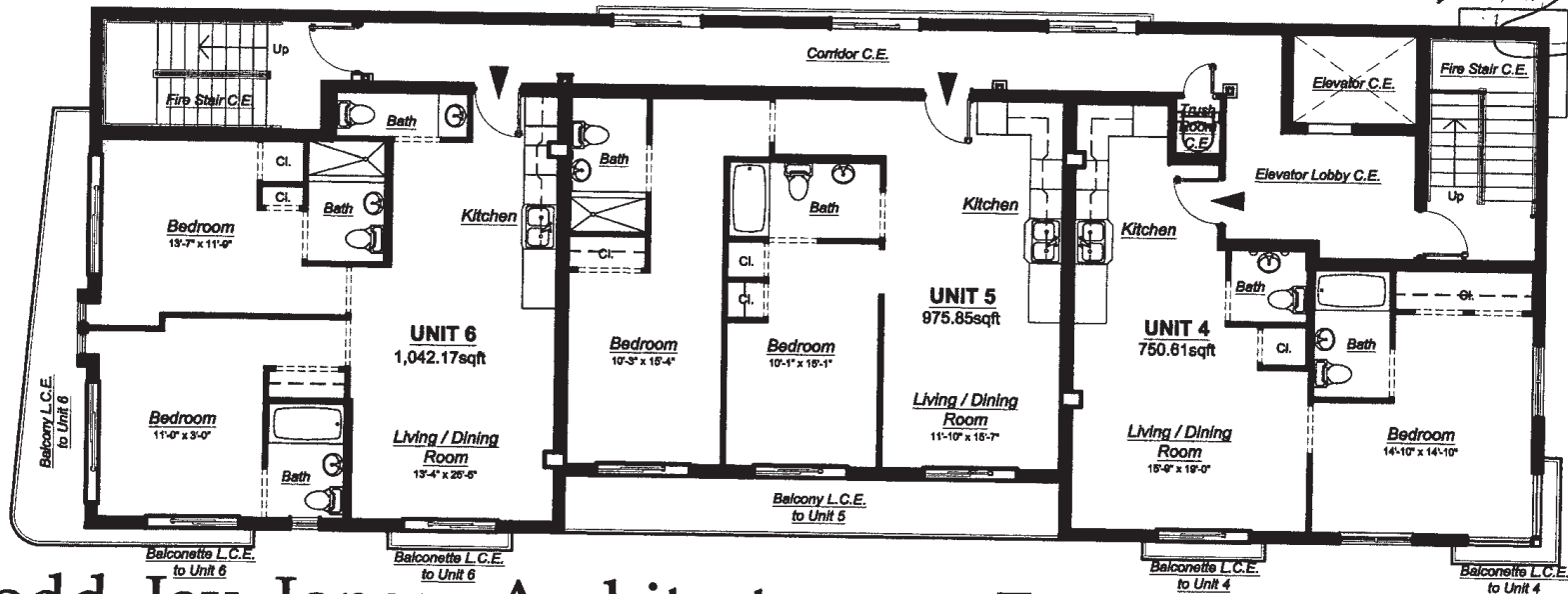
- All lands and all portions of the Condominium Building or other improvements, not located within the confines of a Condominium unit are part of the Common Element or Limited Common Element as indicated within the graphics or floor plans.

- All dimensions shown in the individual units are to the interior of the unfinished surfaces (walls, floors, ceilings) and may vary slightly due to construction or lay outs within each unit.

- This plan is for location of C.E. & L.C.E. areas only, please refer to the survey for exact plans and dimensions.

- Common elements (C.E.) means the portion of the Condominium property not located in the Condominium unit, but shall include chases through each unit for electrical conduits, plumbing pipes, ducts, telephone lines and other facilities for the furnishing of utility services to each Unit.

- These plans are not to be used for construction purposes.



Todd Jay Jonas, Architects

1717 North Bayshore Drive Suite 2551, Miami, Florida, 33132 Telephone (305) 377-4808 TeleFax (305) 377-4559

Terrace, a Condominium

945 Michigan Avenue, Miami Beach, Florida